

RiverWare / DSS Interface And Future Directions In DMIs and Output

Overview

Bill Oakley

Formal Requirement

- Allow RiverWare to connect directly to the USACE Data Storage System (DSS)
- For the purpose of integrating RiverWare into the Corps. Water Management System (CWMS)

General Requirement

- Allow RiverWare to connect directly to a variety of data sources and destinations:
 - DSS
 - HDB
 - GPAT
 - Excel
 - Flat (text) files
 - External applications

Terminology

- Technology – A database technology, for example DSS
- Database – An instantiation of a technology, for example a DSS file
- Dataset – A subset of a database, for example a DSS file and Part F value

General Approach

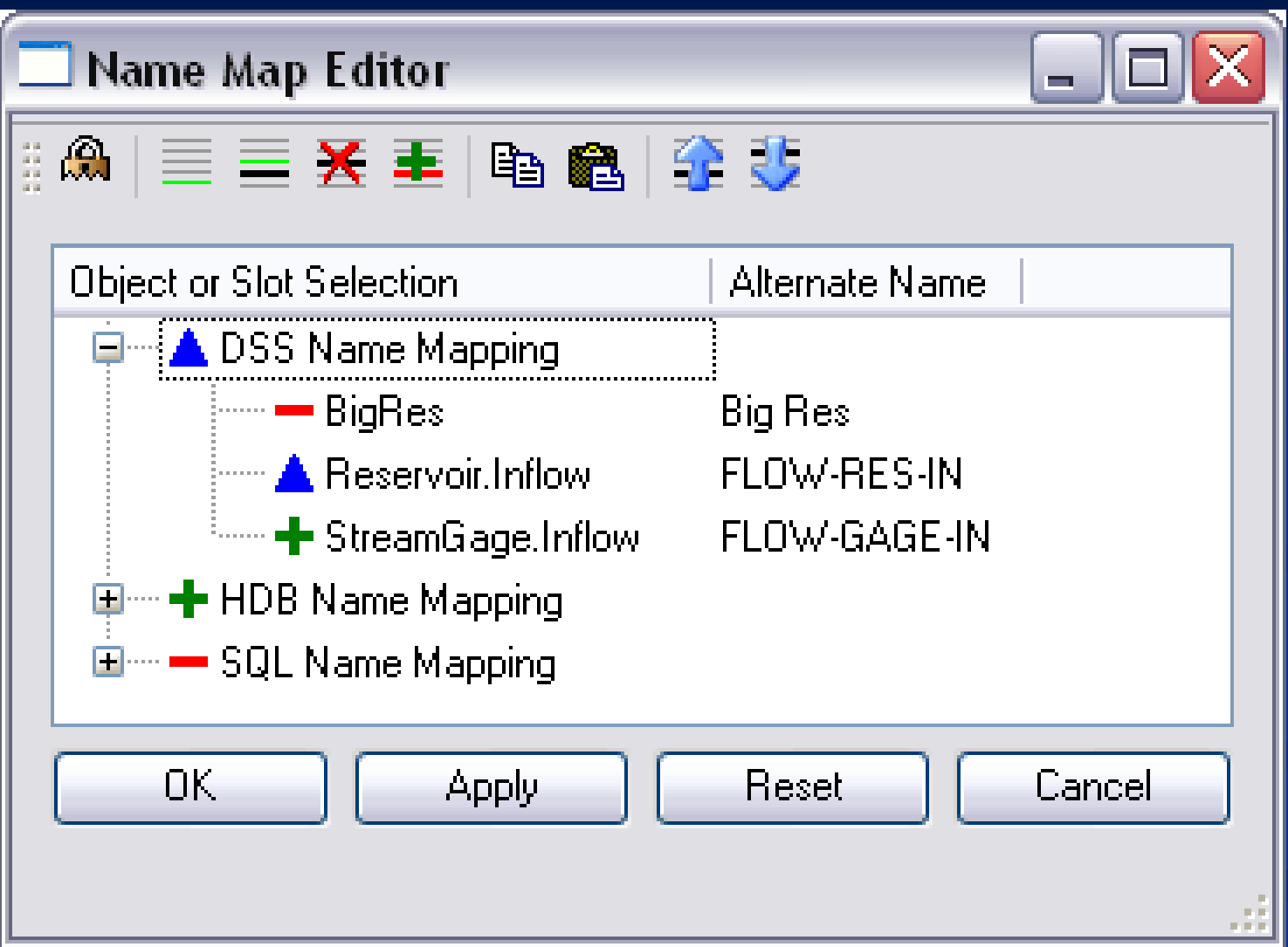
- Technology-neutral front end which identifies the slots and time intervals to import data to or export data from
- Technology-specific back ends which connect to a database and read or write data
- Association of slots and time intervals with back ends

General Approach (Cont)

- Improved wildcarding
- Name mapping
- All configuration is through the user interface
- Elimination of control files and DMI executables

Name Mapping

- Multiple named name-mappings
- Each mapping maps object and slot names to their database names



Datasets

- Technology specific
- A subset of a database; as such, it identifies both the database and the subset
- Name mapping
- Scale and unit information

Dataset Editor



Dataset Name: DSS Observed Data

General

DSS

Name Mapping:

NONE

Scale and Units:

NONE

CWMS Name Mapping

DSS Name Mapping

HDB Name Mapping

Unit Type	Scale	Units
AREA	1	ft2
FLOW	1000	cfs
LENGTH	1	ft
VOLUME	1	ft3

OK

Apply

Reset

Cancel

Dataset Editor



Dataset Name:

- General
- DSS**

DSS File:

DSS Default Part Information:

DSS Default Part Information

Part A	Part B	Part C	Part D	Part E	Part F
Neosho	<input type="text" value="OBJECT_NAME"/>	<input type="text" value="SLOT_NAME"/>			AvgFlow

- OK
- Apply
- Reset
- Cancel



Database DMIs

- Manages list of slots and time intervals data will be imported to or exported from
- Manages list of datasets which will import or export the data
- Manages the relationships between the slots and the datasets
- Controls the importing and exporting of the data

Database DMI Editor



Database DMI Name:

Type

Input Output

Confirm Warnings

Duration:

Slots and Time Intervals

Slot Selection	Start Offset	Start Base	End Offset	End Base



Datasets

Datasets and Associated Slots	Start Offset	Start Base	End Offset	End Base

OK










Apply

Revert

Cancel



Slots and Time Intervals

Slot Selection	Start Offset	Start Base	End Offset	End Base
 Reach.Outflow	0	Start	0	End
  Reservoir.Storage	0	Initial	0	Initial
 BigRes.Inflow				
 HugeRes.Inflow				
 SmallRes.Inflow				
 TinyRes.Inflow				
  StreamGage.Outflow	0	Start	0	End

Datasets

Datasets and Associated Slots	Start Offset	Start Base	End Offset	End Base
+ DSS Forecast Values				
- + DSS Observed Values				
Reservoir.Storage	0	Initial	0	Initial