

# Multiple Run Management (MRM) Enhancements

Overview

Bill Oakley

# MRM Enhancements

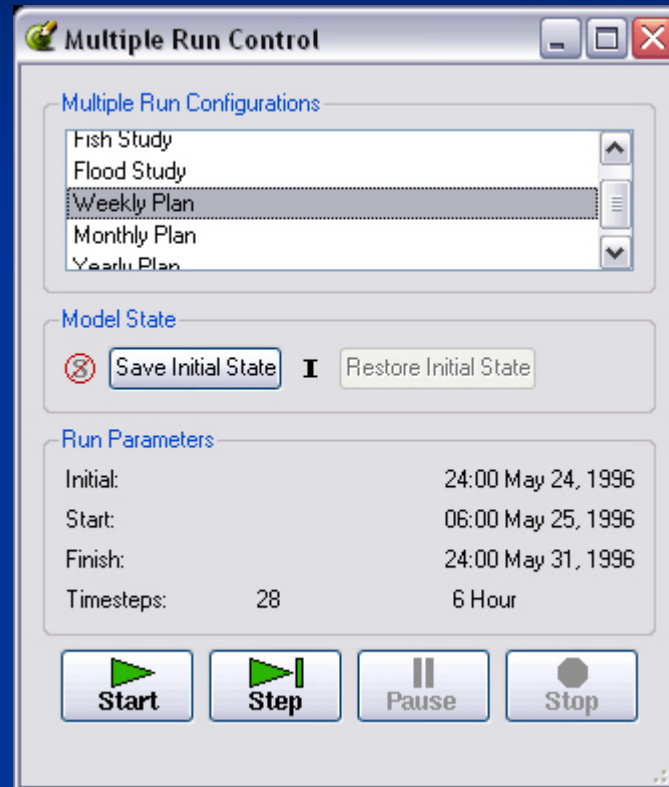
- Motivated by requests and modelling requirements of users
- Near-term (Release 4.6) and mid-term enhancements

# Near-Term Enhancements

- Multiple named configurations
- Output DMI invoked after each run
- Trace number provided to input and output DMIs
- Multiple output (RDF) files
- Fully portable MRM configurations
- “Apply / Cancel” paradigm in run control dialog
- User interface ported to Qt

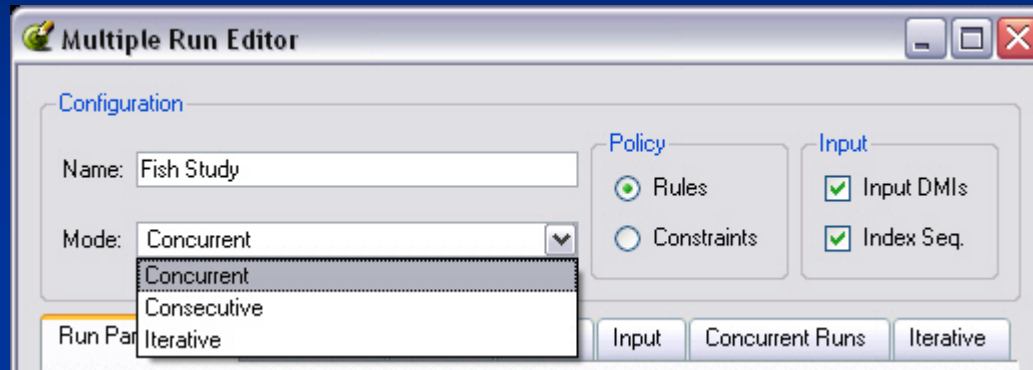
# Multiple Run Control Dialog

Run parameters  
no longer edited  
in run control  
dialog



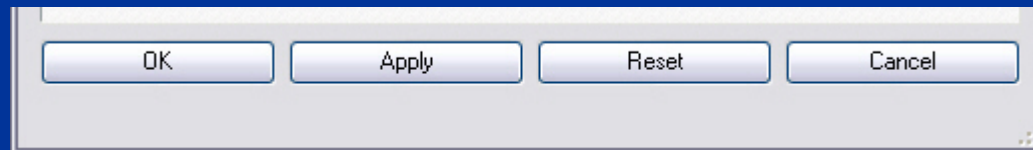
Multiple named  
configurations

# Multiple Run Editor Dialog

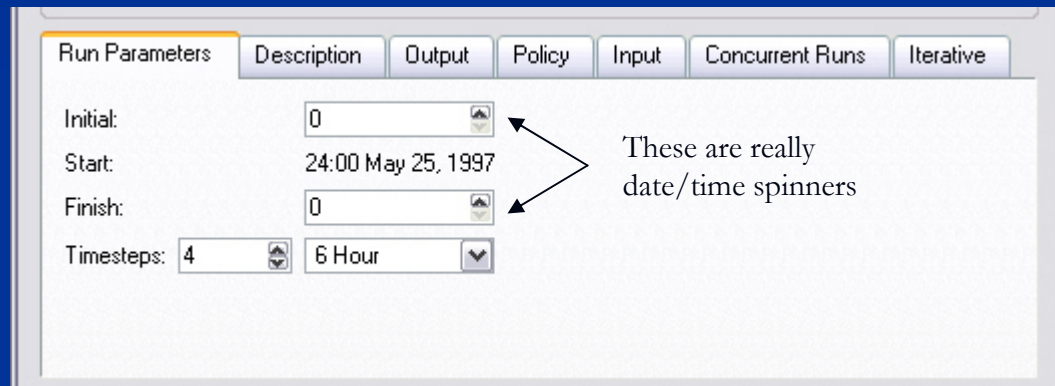


Specify “top-level”  
configuration

Edit with  
Apply/Reset/Cancel

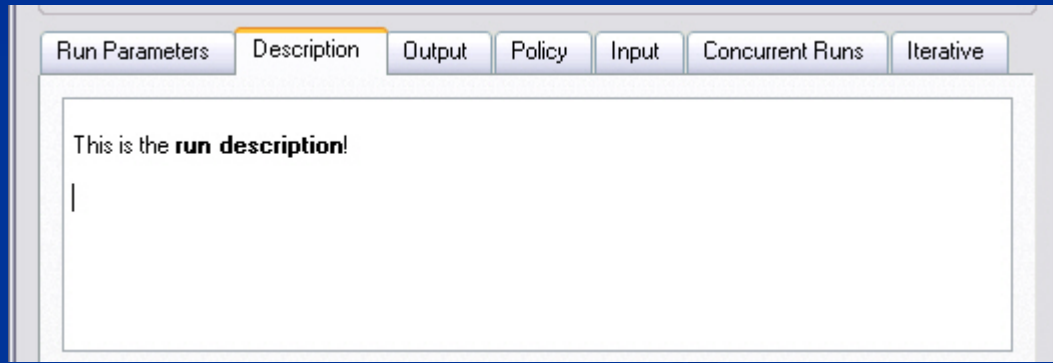


# Multiple Run Editor Dialog



- Not editable for consecutive runs

# Multiple Run Editor Dialog



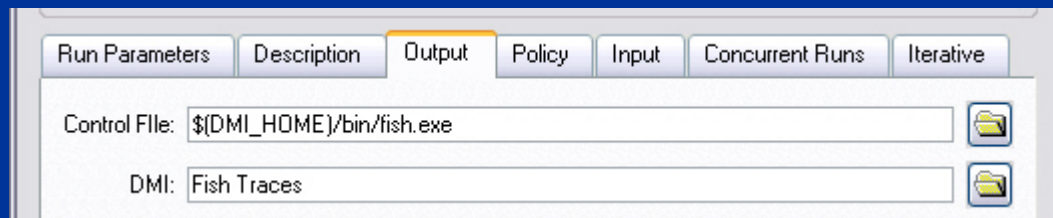
- Multiple line description
- Can contain rich text

# Multiple Run Editor Dialog

Control file containing multiple slot and output file specifications:

LevelPowerReservoir.Storage: file=~ / ...

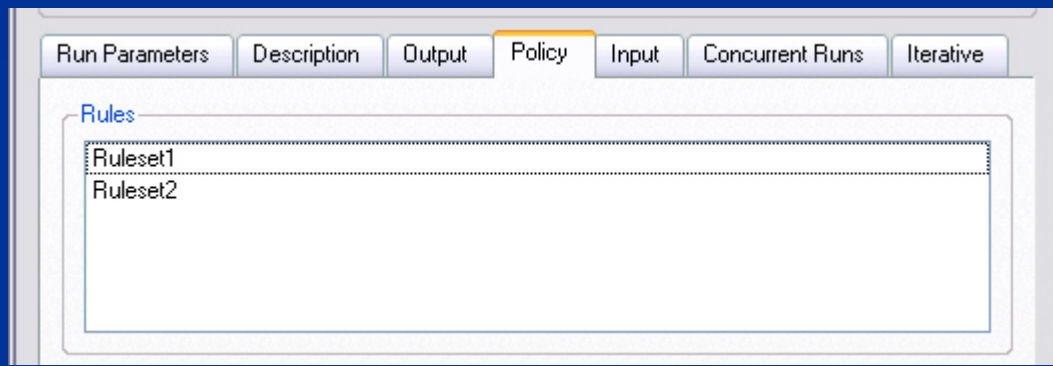
Reach.Inflow: file=~ / ...



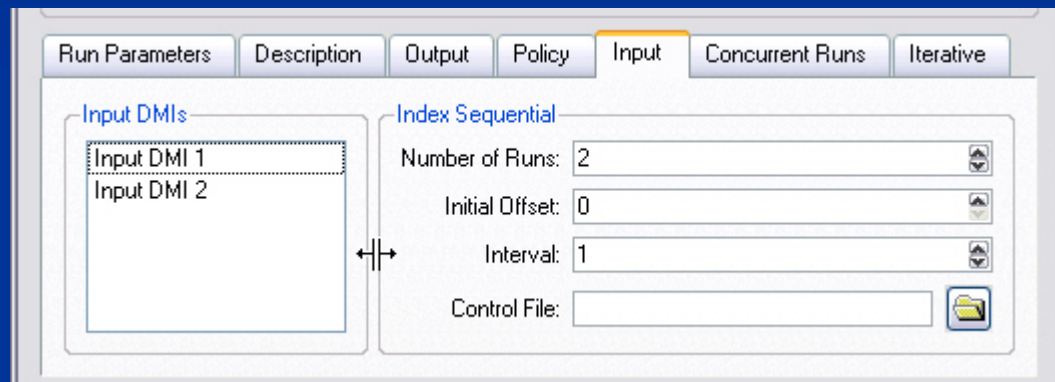
Optional output DMI invoked after each run  
(with trace number provided)



# Multiple Run Editor Dialog

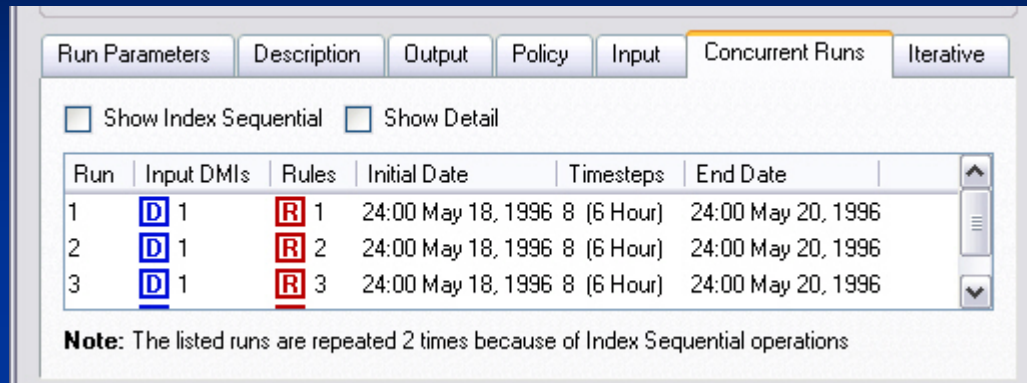


# Multiple Run Editor Dialog

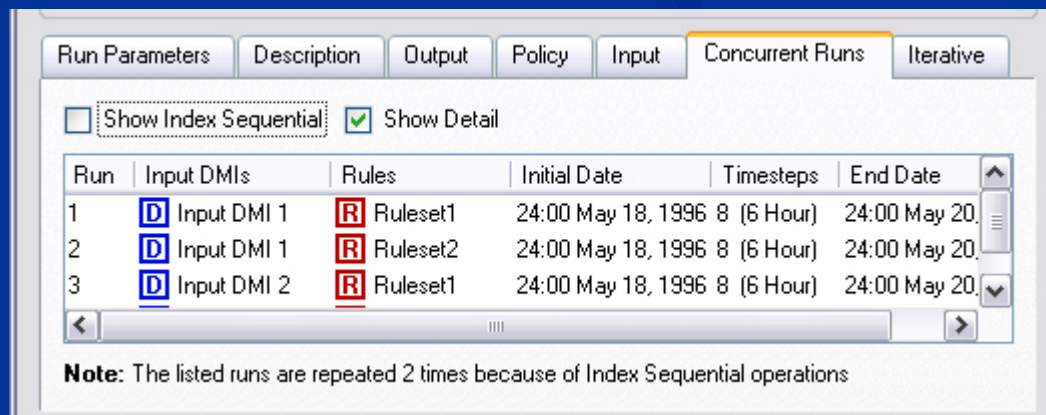


Splitter to adjust view

# Multiple Run Editor Dialog



- Two views, without and with details shown



# Mid-Term MRM Enhancements

- Rpl-based iterative mode:
  - User provides a Rpl block to be executed after each run
  - Rpl block examines the state of the system; if it sets values the MRM controller performs another run
  - Built in max-iterations checking

# Mid-Term MRM Enhancements

- Elimination of control files
  - Bring specification of output slots and index sequential slots into the user interface