

RPL Analysis Tool

Overview and Demo

Brian Eyster - CADSWES

Overview

- Enhanced version of Rules Analysis Dialog
- Two Types of information:
 1. Static relationships between objects
 2. Information about RPL objects

Info about
RPL Objects

Static
Relationships

Name	Active	Priority	Time	Evaluations	De
Rule1	✓	5	N/A	N/A	
Assign Statement	✓		N/A	N/A	
Function8	✓		N/A	N/A	
Assign Statement	✓		N/A	N/A	
Function1	✓		N/A	N/A	
Function2	✓		N/A	N/A	
Function6	✓		N/A	N/A	
Assign Statement	✓		N/A	N/A	
Function2	✓		N/A	N/A	
Function6	✓		N/A	N/A	
Rule1	✓	8	N/A	N/A	

Call-Graphs

```
Rule Editor - "DocRuleset.rls : Policy Group2 : Rule1"
File Edit Rule RPL Set Not Loaded
Name: Rule1
Body:
StorageReservoir0.Inflow []
= Function1 () * 123.00000000
```

```
Rule Editor - "DocRuleset.rls : Policy Group2 : Function1"
File Edit Function RPL Set Not Loaded
Name: Function1 Return Type: NUMERIC
Arguments: ()
Body:
Function2 ()
+ 23.00000000
* StorageReservoir2.Inflow []
```

```
Rule Editor - "DocRuleset.rls : Policy Group2 : Function2"
Name: Function2 Return Type: NUMERIC
Arguments: ()
Body:
IF (IsNaN StorageReservoir0.Storage []) THEN
24.00000000
ELSE
38.00000000
ENDIF
```

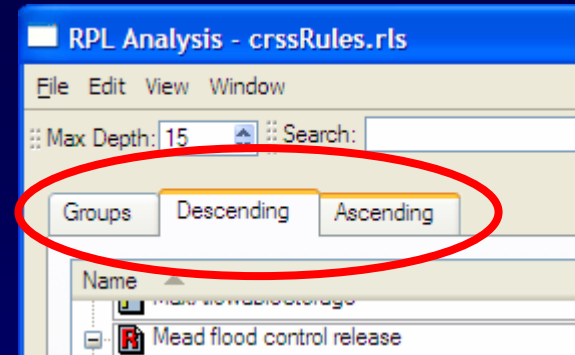
```
RPL Analysis - DocRuleset.rls
File Edit View Window
Max Depth: 15 Search: Find Next
Groups Descending Ascending
```

Name	Priority
Rule1	5
ASSIGN TO \$ "StorageReservoir0.Inflow" []	
Function1	
Function2	
Rule1	8

Descending View

The 3 Views

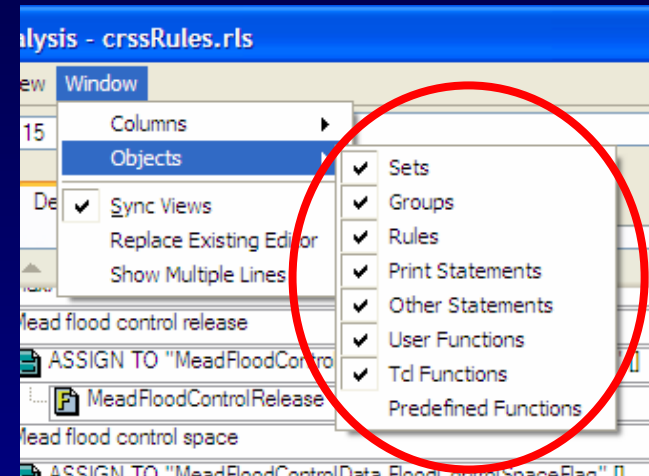
- Groups View
- Descending View
 - What functions does this call?
 - Infinite Recursion
- Ascending View
 - Who calls this function?
- Synchronized



Customize

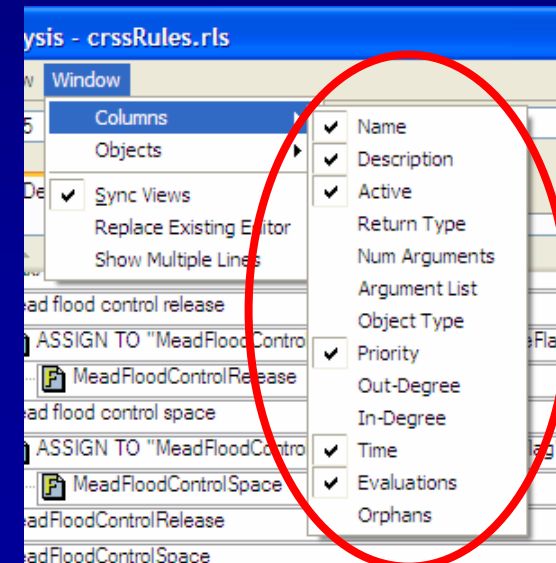
Object types (rows)

- RPL Statements and predefined functions



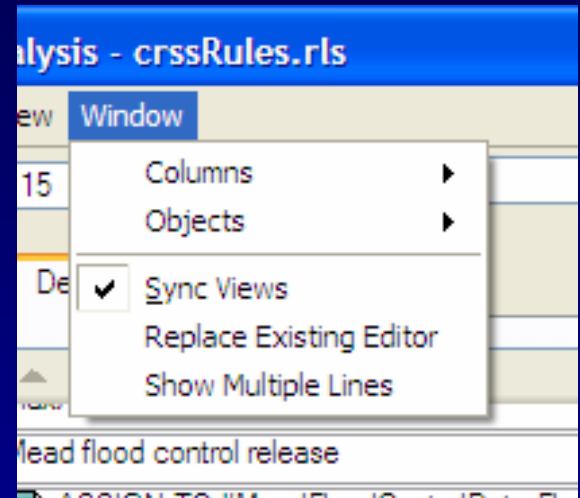
Object info (columns)

- How to enable performance collection



Customize (Cont'd)

- Sync views
 - Select in all views
- Replace existing editor
 - Close previous editor
- Show multiple comment lines



Other Features

■ Navigation

- View menu and right-mouse context menus
 - Expand all, collapse all
- Sort by columns
- Arrow keys, pageUp/pageDown

■ Accessible from any RPL dialog (Ctrl+Y)

■ Export to text file

■ Printing

■ Online help