

RiverWare Viewer & Scenario Manager

Overviews and Demos

Brian Eyster - CADSWES

Viewer

- Motivations
- Overview
 - No model runs
 - No editing of models
 - Enable all analysis and output tools
- No user support
- License
- Available since March 2004

Viewer (Cont'd)

■ How it works

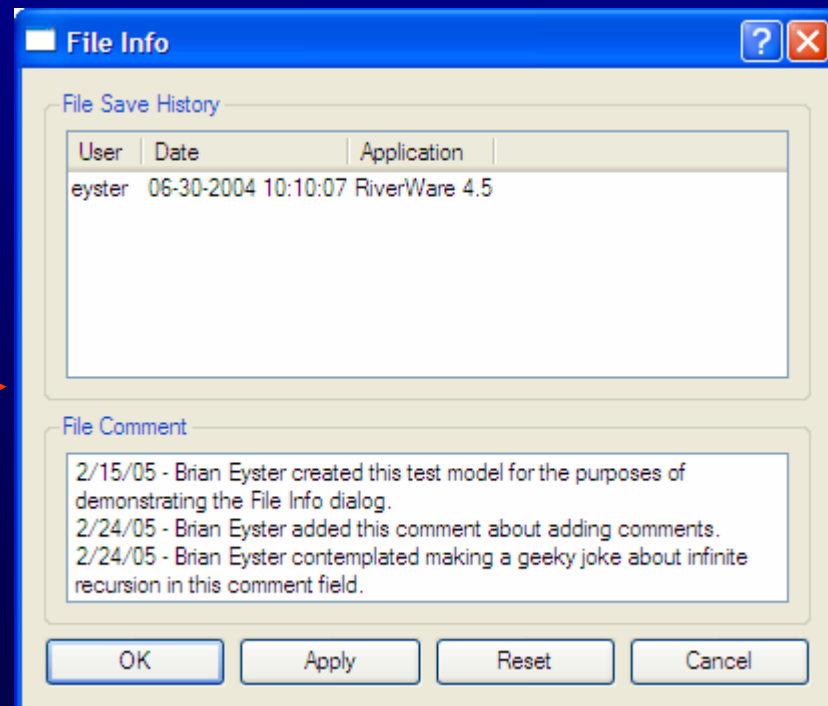
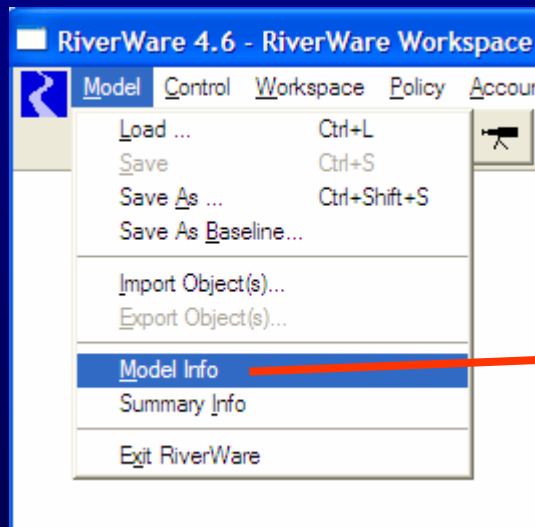
- Same executable different license
- Also available from full Riverware
 - Command-line option: `--viewer`

■ Additional functionality

- Display “Viewer” in all output
- Display “Viewer” on dialogs

New Model Info Dialog

- Available for all models and versions



Scenarios

■ Motivations

- Only edit subset of model
- Preserve data in baseline model
- Constrain range of editable slots
- Organize editable slots
- Model runs with different scenarios
- Document slots and scenarios
- Full Riverware (not Viewer)

Scenario Workflow

Baseline Model Developer

1. Load existing model
2. Select slots for scenarios
3. Add baseline comments
4. Save as baseline model
5. Distribute baseline model

Scenario User

1. Load *baseline* model
2. Create/load scenario
3. Edit scenario slots
4. Change active scenario
5. Run model
6. Save scenario

Scenario Manager Dialog

Active scenario

Loaded Scenarios

Edit Slots

Scenario Comment

The screenshot shows the Scenario Manager dialog box with the following components:

- Active Scenario:** A dropdown menu showing "Scenario 2".
- Loaded Scenarios:** A set of tabs for "Baseline", "Scenario 1", and "Scenario 2".
- Slot Table:** A table with columns for Slot, Comments, Min, Max, and Changed. The "StorageReservoir0.Pool Elevation" slot is selected, and a context menu is open over it.
- Scenario Comments:** A text area containing the comment: "Created by eyster on 02-24-... This is my second scenario. the scenario dialog."

Slot	Comments	Min	Max	Changed
StorageReservoir0.Total Inflows			1000.00	
StorageReservoir0.Inflow	Comment the inflow slot.	100.00	1000.00	Yes
StorageReservoir0.Spill				
StorageReservoir0.Pool Elevation	Here is a comment for the pool el...			
StorageReservoir0.Outflow		50.00	200.00	
StorageReservoir0.Rel				Yes

Context Menu for "StorageReservoir0.Pool Elevation":

- Open Slot...
- Open Baseline Slot...
- Plot Slot... (Ctrl+P)
- Plot Slot + Baseline... (Ctrl+Shift+P)
- Plot Slot on All Scenarios... (Alt+P)
- Clear Slot
- Fill with Baseline Values
- Check min/max
- Edit slot comments

Other Scenario Issues

- Cannot re-save a baseline model
- Revert to non-baseline model
- Scenario files
- Create snapshots, plots, output

Scenario Demo
