



# RiverWare Integration with CWMS

Presenters: David Neumann

2016 RiverWare User Group Meeting

August 23-24, 2016

# U.S. Army Corp of Engineers Acronym Soup

- **CWMS: Corp Water Management System**
- **CAVI: Control And Visualization Interface**
- **NMI: Native Model Interface**
- **DSS: Data Storage System**
- **HEC: Hydrologic Engineering Center**

# CWMS CAVI

- Modeling Framework that integrates USACE models together
- Operate the system across modeling applications
- Integration uses HEC-DSS to move data

# Supported Models

- HEC MFP – Precipitation forecast
- HEC HMS – Rainfall Runoff
- HEC Res Sim – Reservoir Modeling
- RiverWare – River and Reservoir Modeling
- HEC RAS – Flood Inundation Analysis
- HEC FIA – Flood Impacts Analysis

# RiverWare Functionality

- Include RiverWare models in the CWMS framework
- Display objects in the maps and interface
- Open SCT, RPL Sets, Plots and Objects
- Open Workspace and Diagnostics
- Make runs and interact with RiverWare
- Demo!



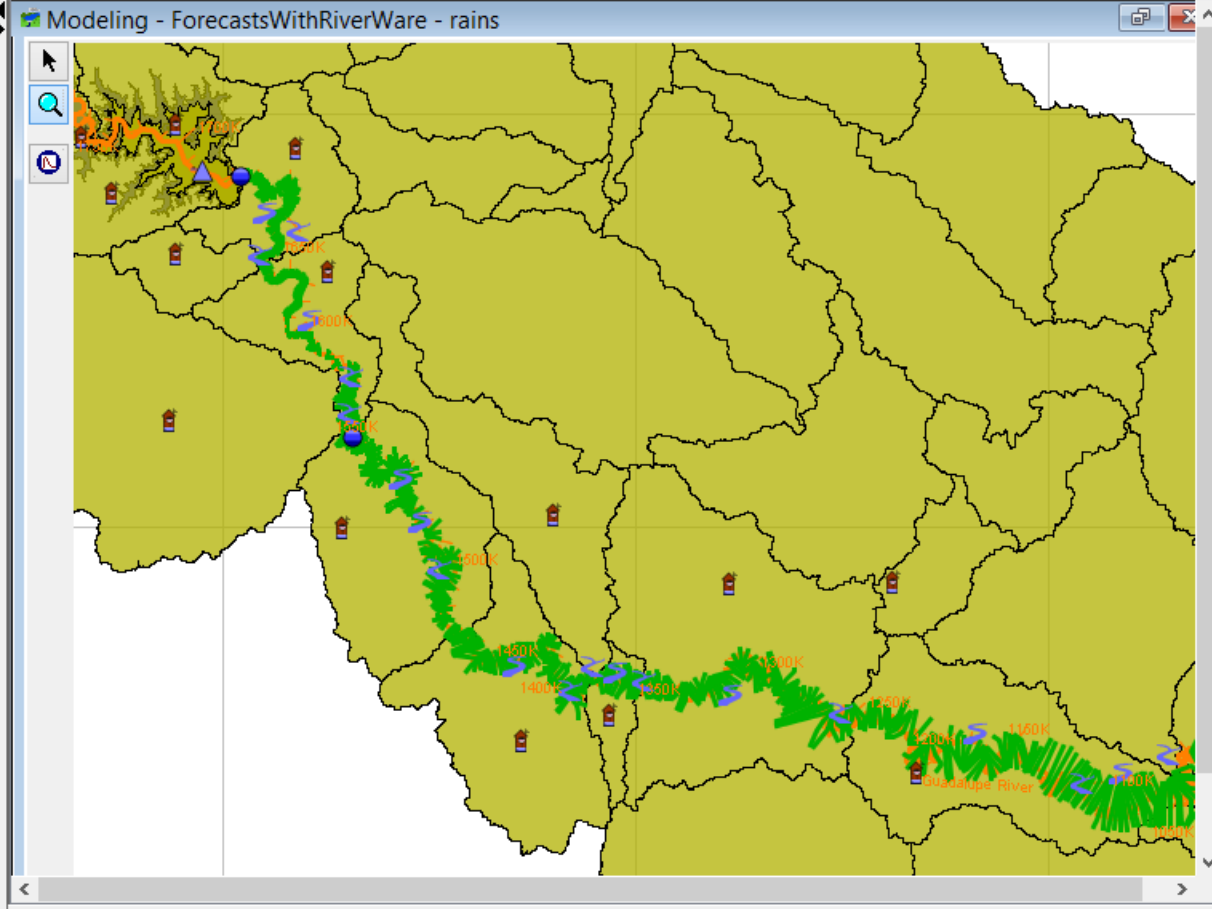
Name:

Time Window

Forecast Time:	17Jun2004	Time:	1000
Extract Start:	08Jun2004	Time:	1000
Start Time:	08Jun2004	Time:	1000
End Time:	26Jun2004	Time:	1000
Display Time Zone:	GMT+00:00		

- Forecasts
- rains - W0E0R0Y0U0
    - withfutureprecip
    - HMS\_AVG\_ADJ
    - RW\_Alt
    - withfutureprecip
    - demoAlt

Reports - RW\_Alt



HMS Reach Guad\_R280 has no stream  
 Placed HMS reach Guad\_R280 on stream Guadalupe River at upstation 542230.0752739185 to downstation