



RiverSMART

Presenters: Bill Oakley

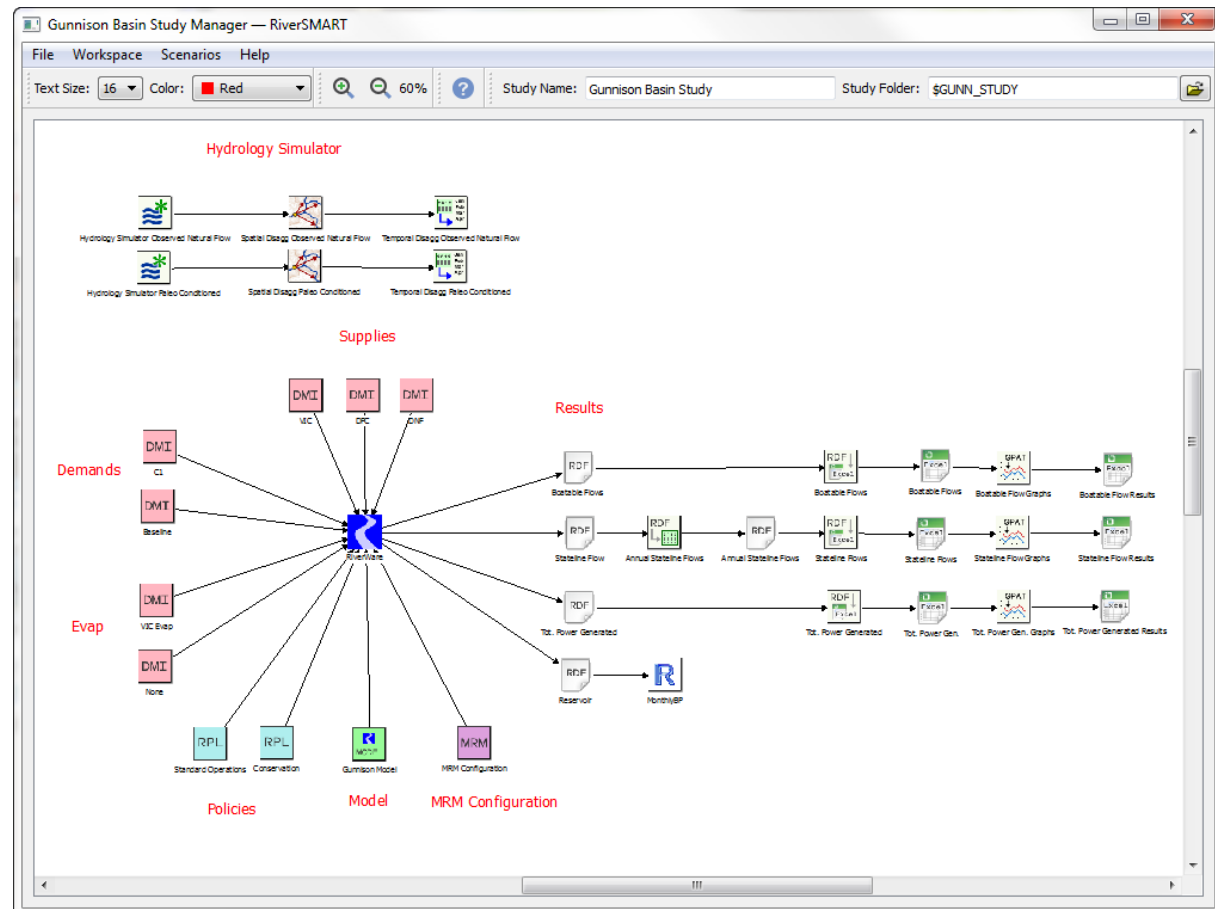
2016 RiverWare User Group Meeting

August 23-24, 2016

RiverWare Study Manager and Research Tools (RiverSMART)

Facilitates large studies with many combinations of inputs by organizing and executing scenarios

- Develop Scenarios that consist of combinations of alternative
 - Ensembles of Hydrologies
 - Demands
 - Operating Policies
 - Infrastructure
- Provide Graphical Representation
- Manage Execution
- Organize Outputs
- Archive the study



Released Enhancements (v1.3)

- New CSV and netCDF file types
- CSV combiner plugin added
- Diagnostics unified
- Activity reporting
- Improved Navigation: buttons to get to the study folder
- Modal Dialogs removed
- Scenario Set indicators

Recent Enhancements (v1.4)

- RiverSMART can look into the RiverWare model to get Dataset Names, DMIs, MRM config, and file names.
- Improved Status Bar



- Allow non-distributed runs
- Demo

Upcoming

- Ensembles as inputs
- New Run Range Plugin to allow runs with date range modifications