



Center for Advanced Decision Support for
Water and Environmental Systems (CADSWES)

UNIVERSITY OF COLORADO **BOULDER**

Scripting, Plotting, SCT, and Workspace Enhancements

Presenters: Robynn Balduf and David Neumann

2018 RiverWare User Group Meeting

February 1-2, 2018

Scripting Enhancements

- Script Manager Loads
- Script Groups and Tabs
- Export/Import Multiple Scripts
- New Action - Execute Script
- New Action - Set Run Timestep Size

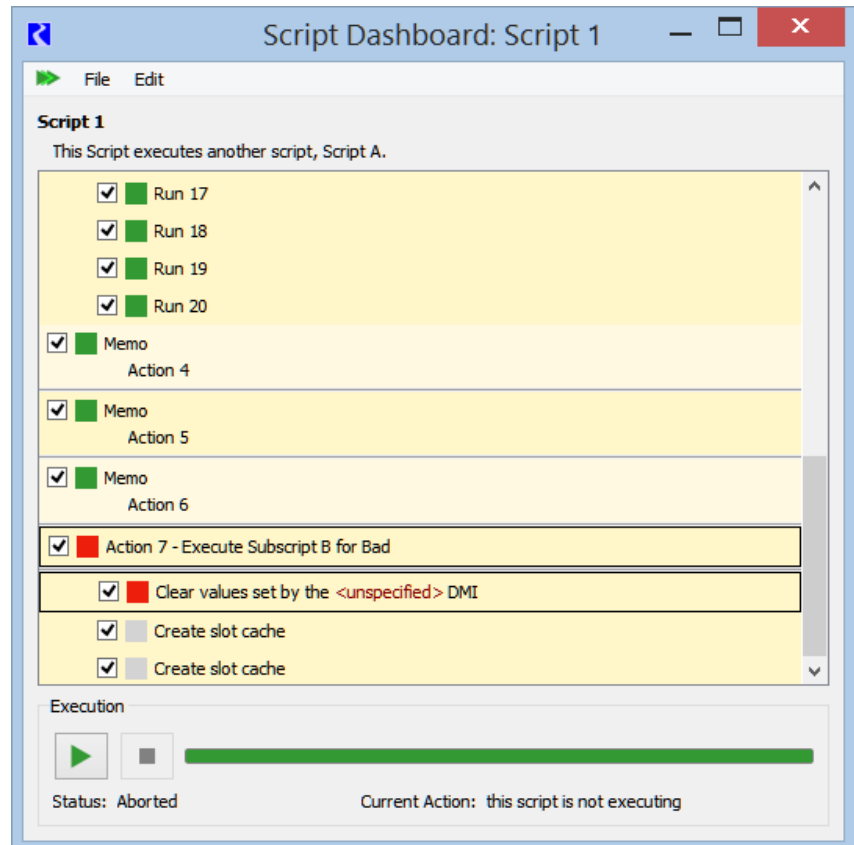
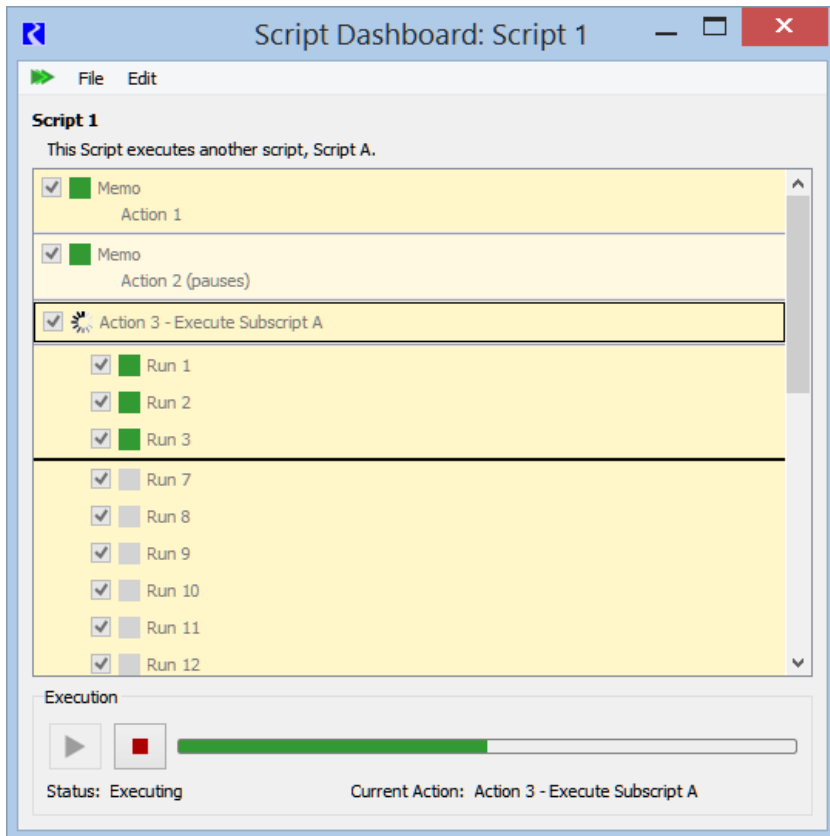
More Scripting Enhancements

- Script Dashboard Enhancements – 7.2
 - Outline and busy icon indicate in-process
 - Green square indicates success
 - Red square indicates error.
 - Automatic scrolling to the currently executing action.
 - Indicator for hidden tasks.
 - Script Dashboard includes subscript actions
 - Subscript actions can be enabled and disabled.

DEMO

Script Dashboard - 7.2

- See progress, subtasks, background work
- and errors.



Plotting – Demo

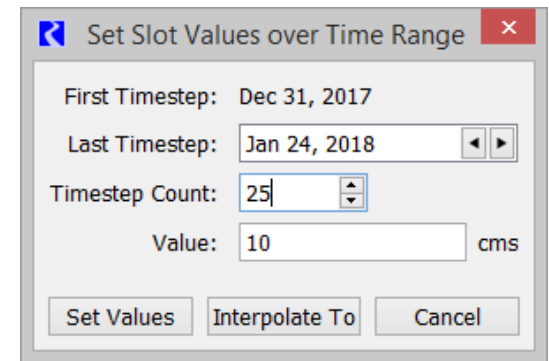
- Edit/View dialogs
- Configure multiple plots
- Plot scalar slots
- User specified axis units

Longer Range Plotting Plan

- Improve sizing of plots
- Better legends
- Text annotations
- Better default colors out of the box
- Let us know how it could be improved!

SCT – Demo

- Undock (copy) sheet
- Better GoTo menu
- Set Slot Labels
- Set Values over Time Range
- Better width when switching sheets
- Better navigation
- Improved Font control



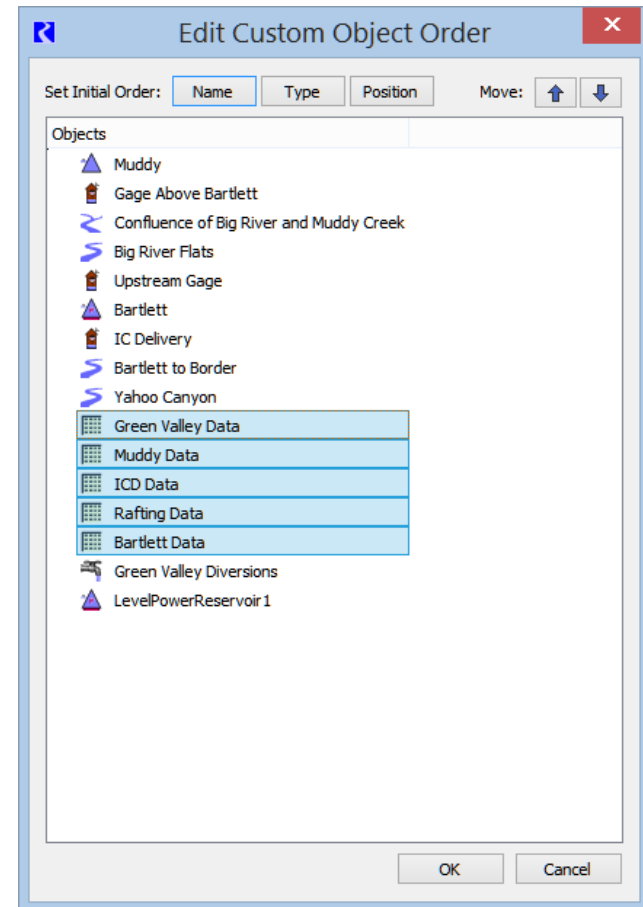
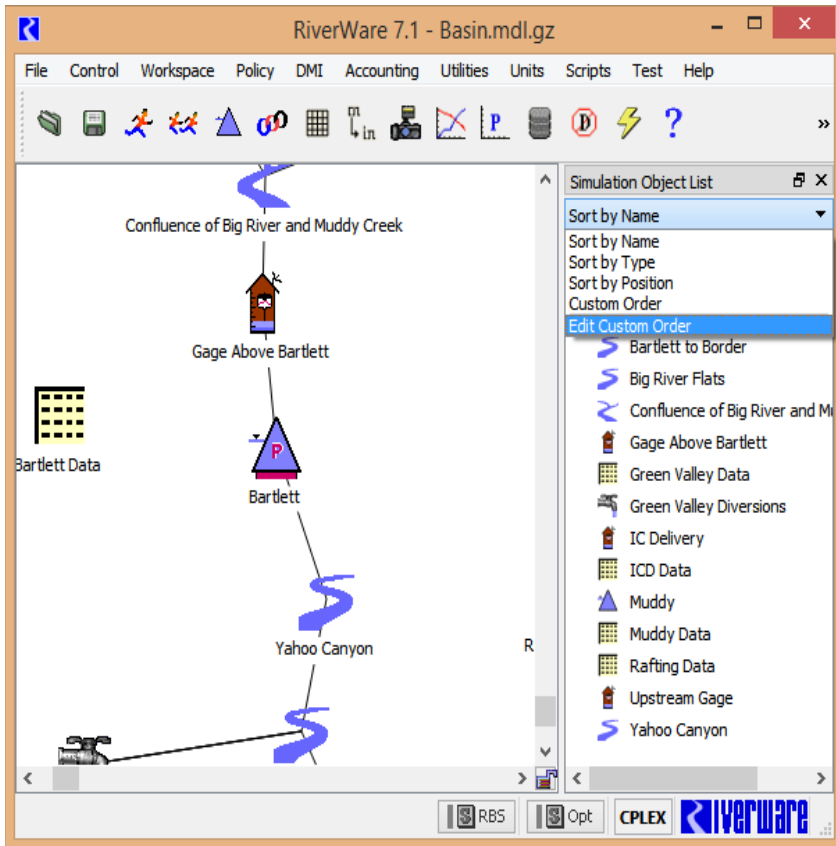
Workspace Enhancements

- Custom Object Order Dialog - 7.1
- New dialog to edit custom object order
- Supports click and drag
- Saved order available on:
 - Model Run Analysis Dialog
 - Object Coordinate Manager

Custom Object Order Dialog

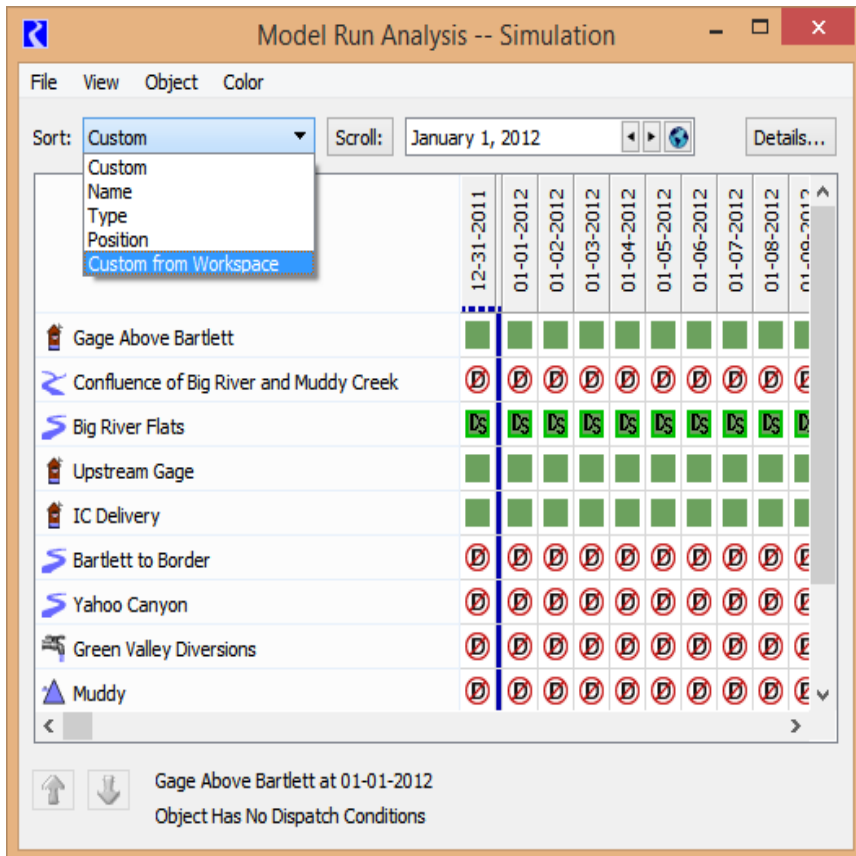
- Edit Custom Object Order

- Highlight, Click, and Drag

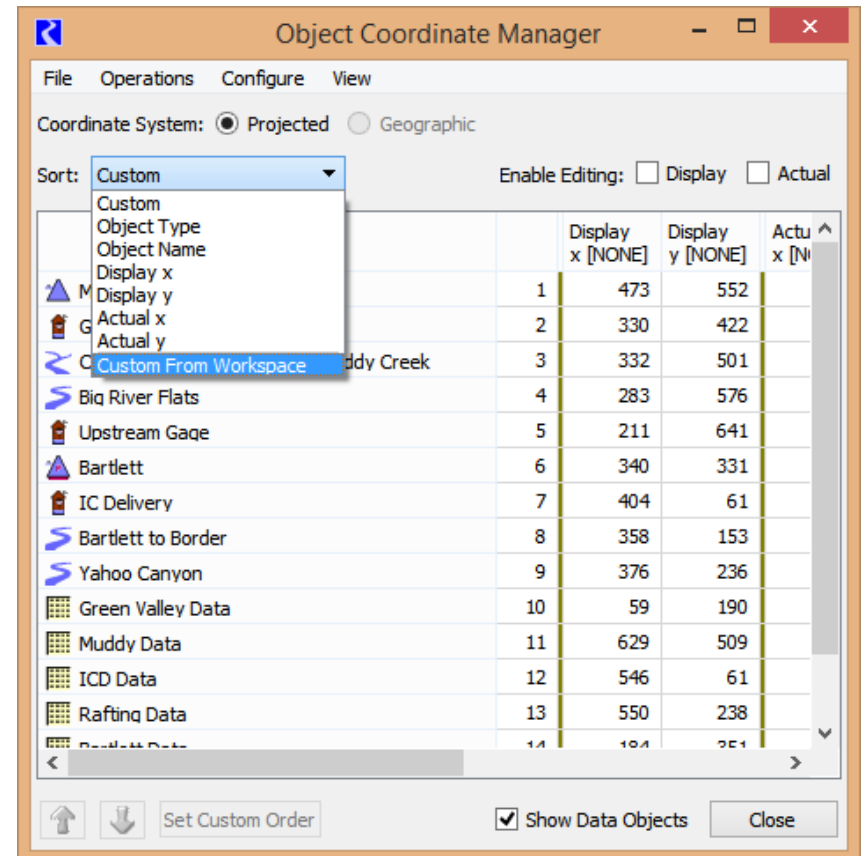


Retrieve Custom Object Order

- Use on Model Run Analysis



- Object Coordinate Manager

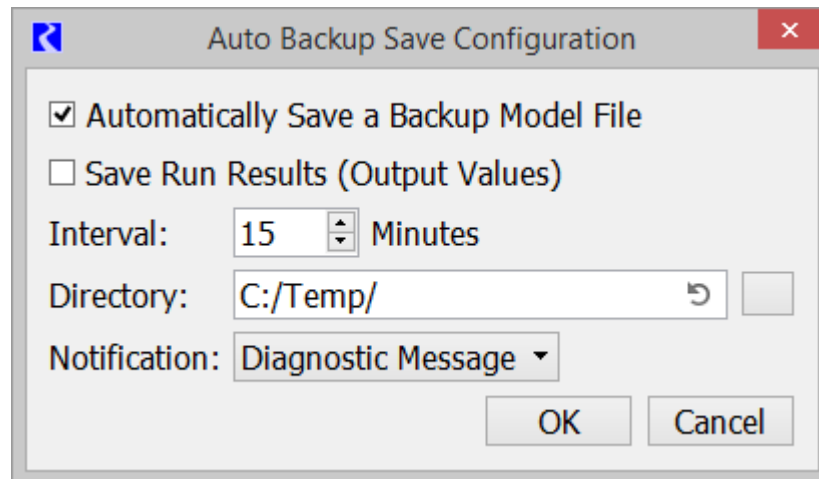


Other Enhancements

- Auto-save
- Model Metadata
- Initial Workspace view
- Precision

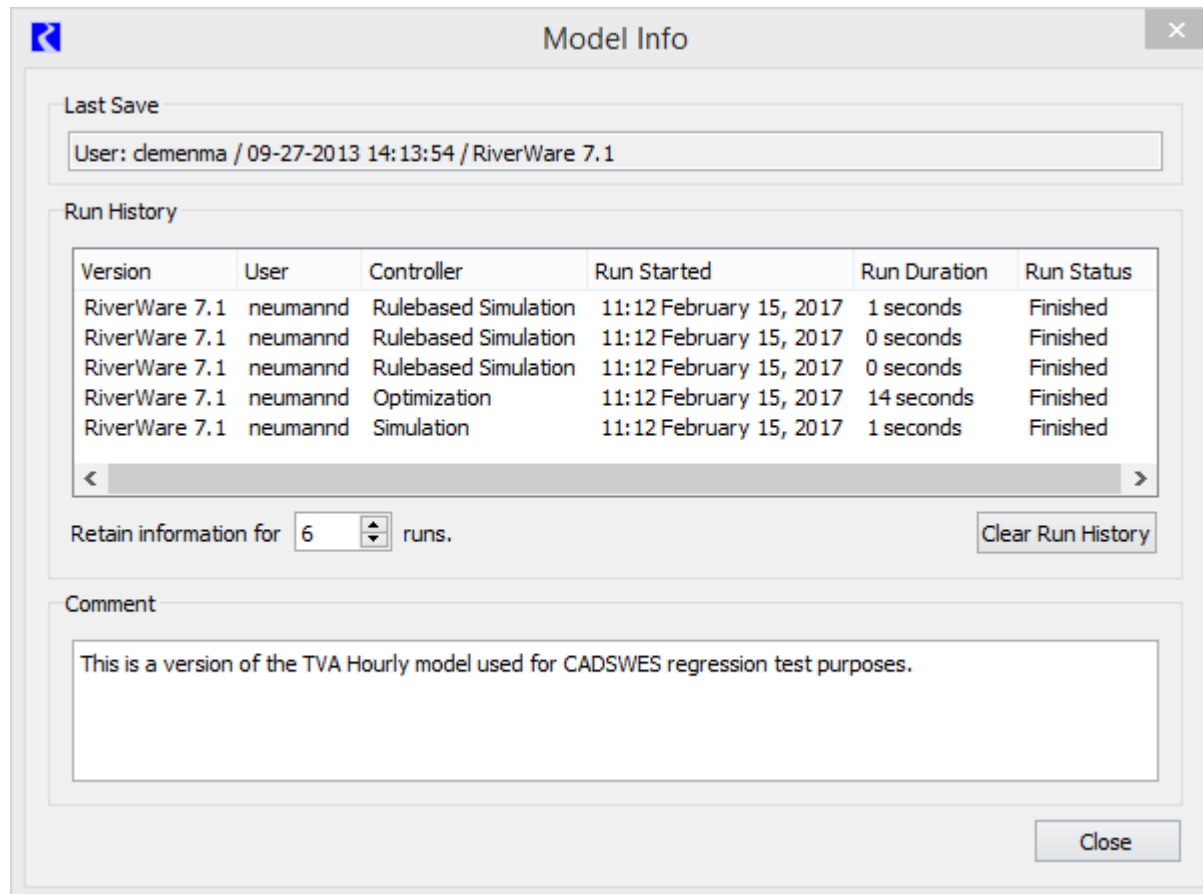
Auto-Save

- Auto-save model file to a backup file – does not save original model
- Auto-saves blocked during “significant” operations. Retries when possible.



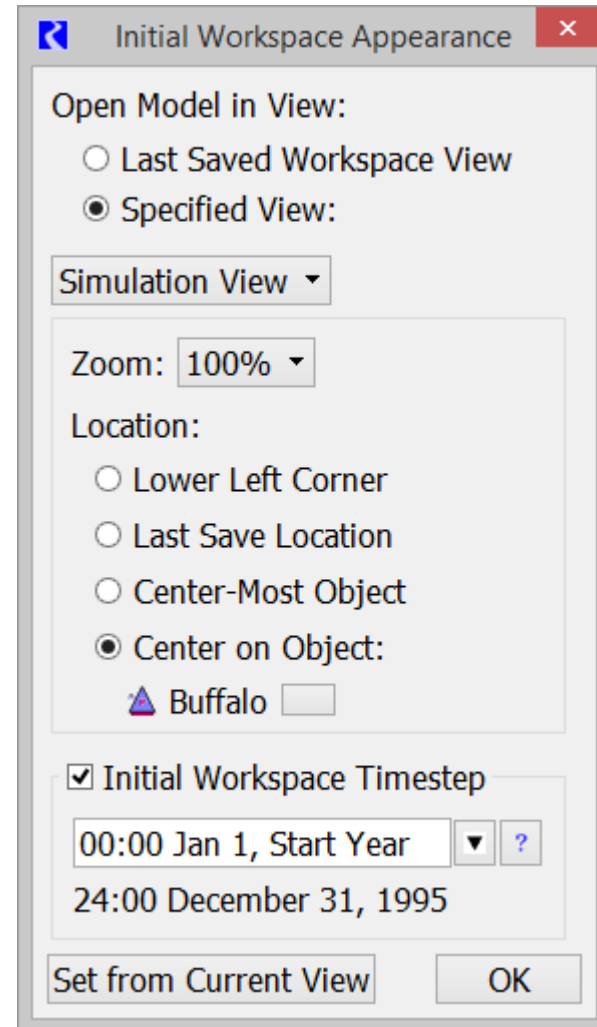
Model Metadata

- Improved Model Info dialog:



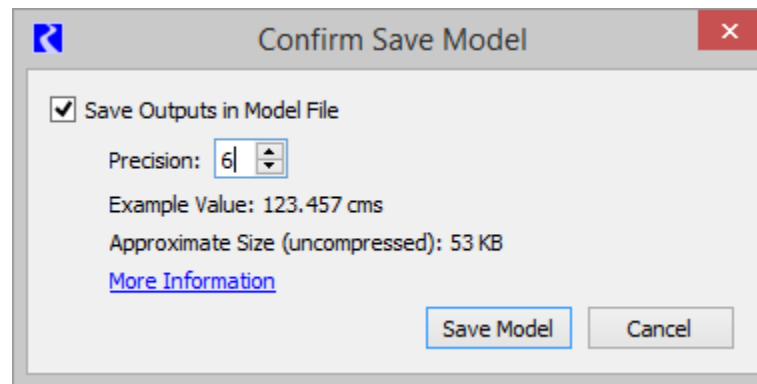
Initial Workspace View

- What does your workspace look like when it opens?



Precision of values

- Save Inputs with full Precision (17 digits)
- Optionally save Output values, user specified precision



- Decrease precision to decrease model size