



Center for Advanced Decision Support for
Water and Environmental Systems (CADSWES)

UNIVERSITY OF COLORADO **BOULDER**

Ongoing Features and Enhancements Open Microphone

2025 RiverWare User Group Meeting

Presenter: David

Topics

1. Review planned enhancements and future direction
2. Mention other topics that weren't covered, but still could be important to you.
3. Open Mic: Solicit comments, questions, and feedback

Future Plans (part 1)

- Windowing and Workspace
 - Continue improving the Multi-window, layouts, and viewers
 - Improve use with multiple monitors and changing displays
 - Improve use of expression slots in Slot Viewers
- Borg-RiverWare
 - Make the interface more user friendly
 - Create documentation and sample models
 - First official release

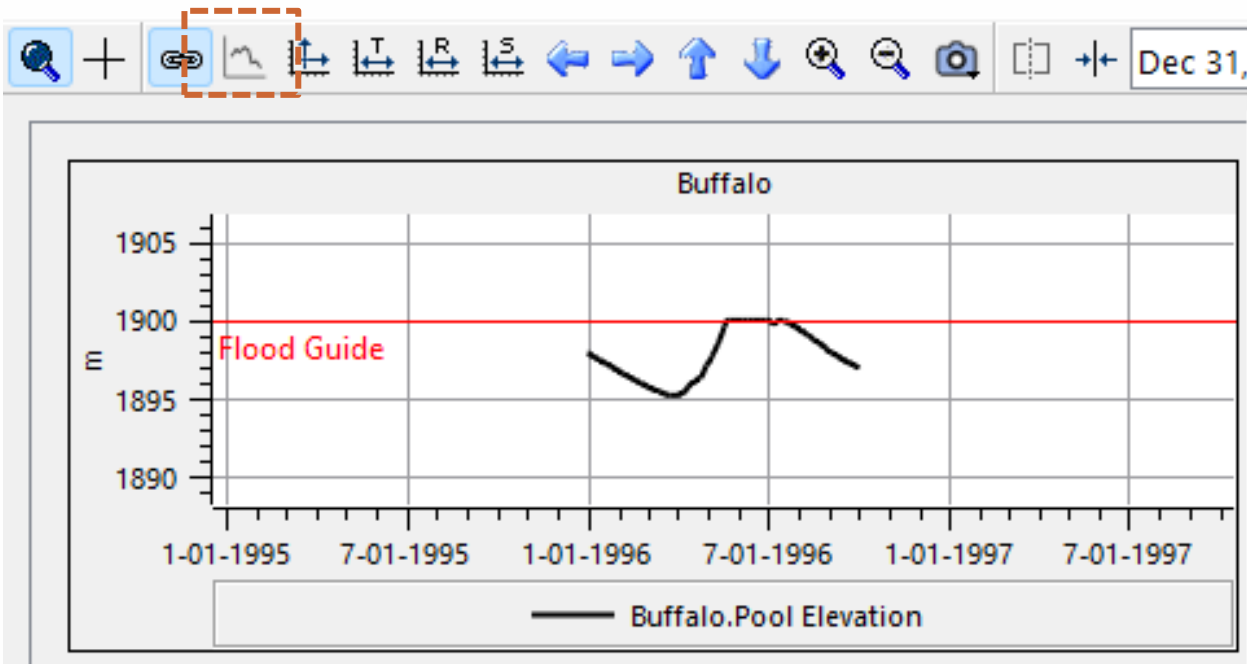
Future Plans (part 2)

- Settings Manager
 - Continue moving over settings
- Outputs and Data Analysis Tool (DAT)
 - Improve ensemble analysis and visualization
 - Add controls over colors, line widths, etc.
 - Allow shading on plot pages
 - Implement other statistical analyses and visualization types

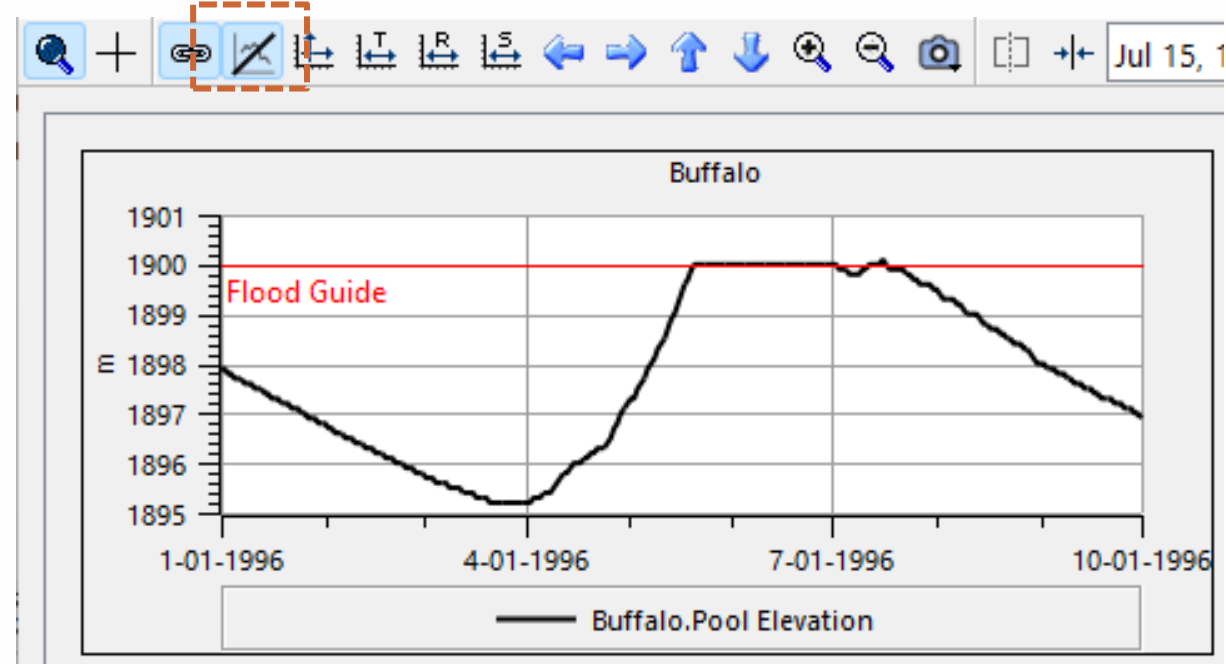
Upcoming Plotting Enhancement

- Plotting – Limit Extents to Data (9.5)

Not Limited – can zoom out very far



Limited to Data – Can't zoom out further than this



Future Plans (part 3)

- Optimization and Hydropower Modeling
 - Continue improving the modeling techniques
 - Support new models

Data Management Interface (DMI)



Enhancements

Excel DMIs

- Specify Run Name at DMI Execution (9.3)

Run Name Type

Single Run Name: Series_Header_Precision

Specify Single Run Name when DMI is invoked

"Run" with MRM run number (i.e. Run0, Run1, etc.)

"Trace" with MRM trace number (i.e. Trace5, Trace6, etc.)

Specify Excel Dataset Run Name

Specify the Run Name for the following DMI invocation:
DMI: Export Flows
Dataset: Flows Dataset

Feb28

OK Cancel

Maintenance:

- Removed option to “Open Excel in the background” and replaced with “Open and Save Workbook” (9.4)
- Control how many DMI invocation records are saved in the model (9.3)

Web Service DMIs

- Web Service DMIs: Import data to RiverWare from the web
 - CDSS Surface Water - Daily
 - CWMS Data API
 - HDB Web Service
 - Reclamation Hydromet
 - USGS Daily Values

CDA Web Service DMIs

- Renamed: CWMS RADAR to CWMS Data API (CDA) (9.3)
- Updated the base URL (9.3)
- Performed maintenance after the webservice format was unexpectedly changed last fall (9.4)

- Possible Upcoming:
 - Implement design for CDA Site Map
 - Add time zone awareness - Design
 - Update to version 2 before version 1 is deprecated

Connections to SQLite Databases

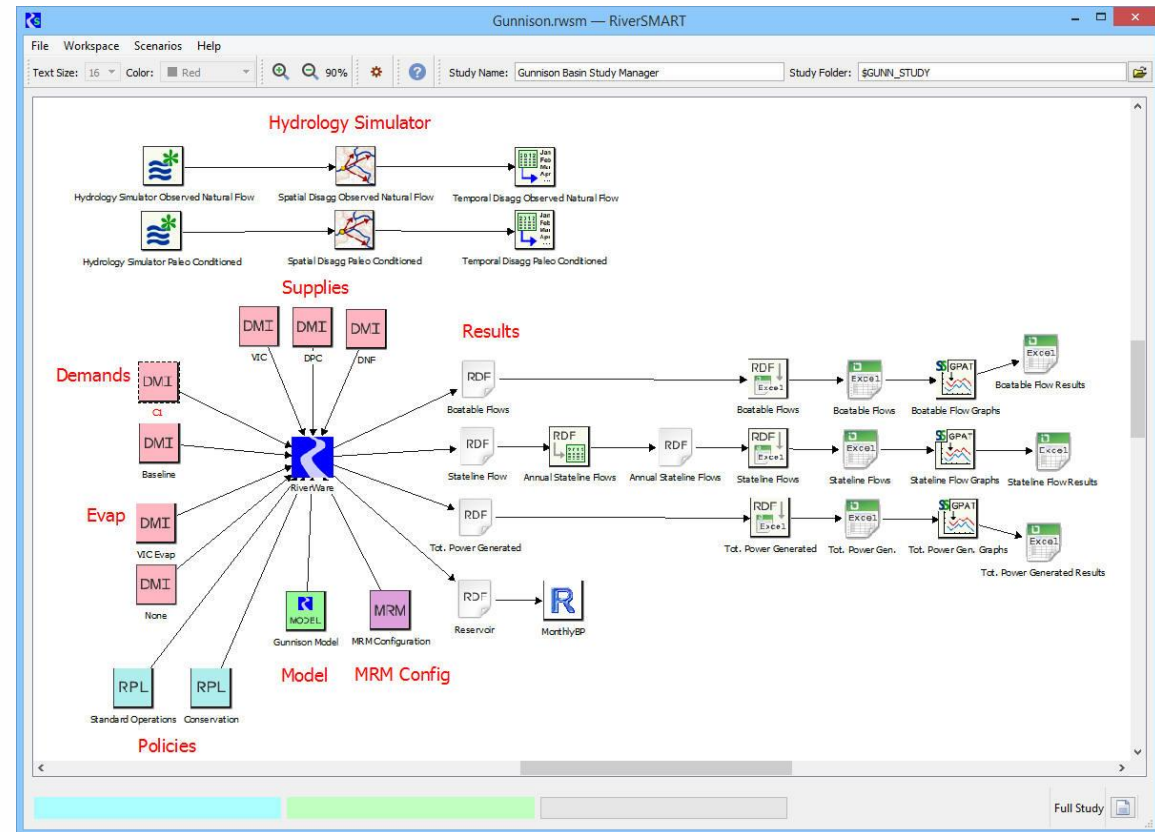
- Demand Input Tool (DIT)
 - Reclamation database with demand data
 - RiverWare's DIT Dataset imports data from DIT to RiverWare
- Reclamation Consumptive Use and Loss (CUL) Database
 - We are creating a tool to convert data from various formats to SQLite
 - No RiverWare connections planned
- Should we develop a more general schema and connections to RiverWare?



RiverWare Study Manager and Research Tools (RiverSMART)

Facilitates large studies with many combinations of inputs by organizing and executing scenarios

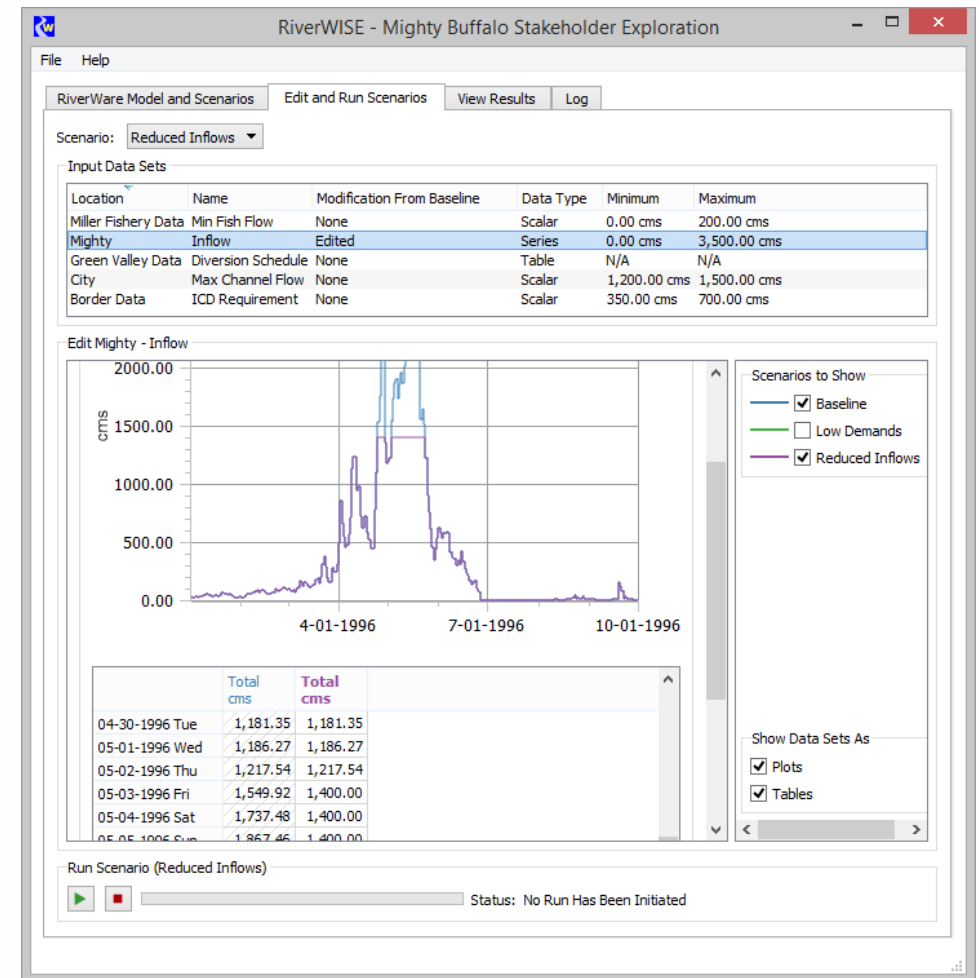
- Develop Scenarios that consist of combinations of alternative
 - Ensembles of Hydrologies
 - Demands
 - Operating Policies
 - Infrastructure
- Graphical Representation
- Manage Execution – distribute to cloud nodes
- Post-process
- Archive the study





For Stakeholders: RiverWare Interactive Scenario Explorer (RiverWISE)

- Stakeholders run scenarios without RiverWare experience
- Modelers prepare a scenario file with baseline run and changeable inputs
- Stakeholders load scenario file and change inputs, make runs, compare output
- Stakeholders can save runs and share with others

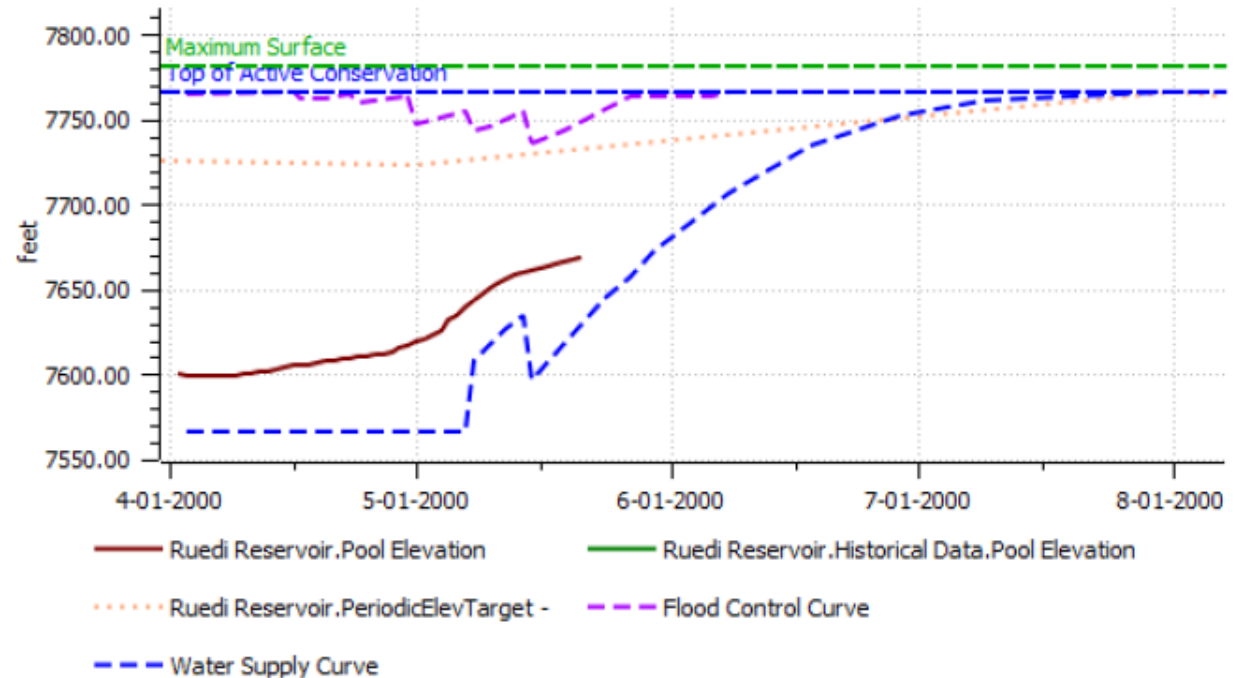


FIRO / RIDM Update

- Forecast Informed Reservoir Operations (FIRO)
- Risk Informed Decision Making (RIDM)
- Implemented 2-stage stochastic programming methodology:
 - MRM runs with ensemble analysis
 - RCL batch script
 - RiverWare scripts in the model
 - Initialization rules
- Tested on Buffalo Bill Reservoir (see 2023 meeting presentations)
- Issues with the forecast ensembles prevented meaningful analysis of the methodology's performance

FIRO / RIDM Upcoming

- Generalize RiverWare FIRO functionality
 - Easier to implement in other models
 - Apply for two scales:
 - Seasonal forecasts
 - Operations / Short-term forecasts
- Complete study on Ruedi Reservoir
 - Both short-term and seasonal forecasting
 - Dynamic envelopes



Feedback and Open Mic

- Tell us about other applications or new projects
- Questions on any topic presented early
- Unmet modeling or processing needs
- Usability issues
- Requests for enhancements
- Anything else you would like to share

